

328-3 / 2030TU

3/16" BEVERAGE DISPENSING



Gas applications

#													
	DN	size	mm	inch	mm	bar	psi	bar	psi	mm	kg/m		
328-3	5	-3	4.7	3/16	9.0	345	5,000	1400	20,000	75.0	0.051		
2030TU-04R14V17	5	-4	4.8	3/16	9.0	210	3,000	1840	12,000	51.0	0.09		

APPLICATIONS

High pressure service for use with CO₂ (2030TU) and nitrogen (328-3) gas. Specifically used in the beverage dispense industry.

FEATURES

- Flavour free materials suitable for food applications
- FDA approved liner
- Pinpricked cover for gas use
- A large range of fittings and accessories available
- Private branding available

CONSTRUCTION - 328-3

Core tube: TEEE.
Pressure reinforcement: One braided layer of high tensile aramid fibre.
Outer cover: TPU black pinpricked.

CONSTRUCTION - 2030TU-04

Core tube: PTFE.
Pressure reinforcement: One braided layer of stainless steel wire.
Outer cover: TPU grey pinpricked.

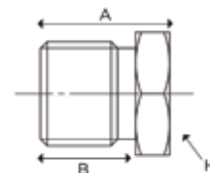
TEMPERATURE RANGE

-40°C up to +100°C.

FITTINGS

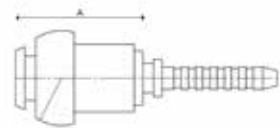
BSP Male bottle connection nut BS341 No.3

#						A	B	
	DN	size	mm	inch				
DS-R5/8	5	-03	4.7	3/16	5/8 BSP	28.5	21.0	27



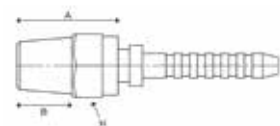
O-ring bottle connection insert to suit 5/8 BSP nut

#						A
	DN	size	mm	inch		
ABD244	5	-03	4.7	3/16	Insert	28.0



BSPT Male fixed

#						A	B	
	DN	size	mm	inch				
ABD248	5	-03	4.7	3/16	1/8 BSPT	19.3	10.5	12.0
ABD256	5	-03	4.7	3/16	1/4 BSPT	21.5	14.5	14.0



Please Note: Variety of fittings in mild steel or stainless steel available, other fittings available on request. We reserve the right to make technical changes without notice.



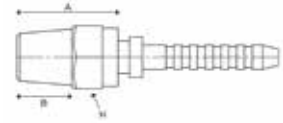
328-3 / 2030TU

3/16" BEVERAGE DISPENSING

THERMOPLASTIC - MEDIUM PRESSURE

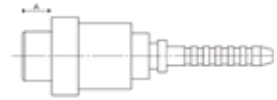
NPT Male fixed

#					A	B		
	DN	size	mm	inch				mm
K91PX-4-03	5	-03	4.7	3/16	1/4 NPT Male	19.0	14.0	14.0



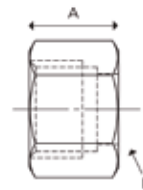
CO₂ Bottle connection insert to suit BS 341 No. 8 nut

#					A	
	DN	size	mm	inch		mm
ABD265	5	-03	4.7	3/16	CO ₂ Female Insert	7.2



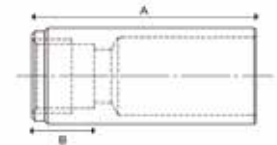
CO₂ Female nut BS 341 No.8

#					A		
	DN	size	mm	inch			mm
ABD251	5	-03	4.7	3/16	21.8 Whitworth	21.0	28.0



CO₂ Female knurled BS 341 No.8

#					A	B	
	DN	size	mm	inch			mm
ABD253	5	-03	4.7	3/16	21.8 Whitworth	70.0	19.5



Plastic hand wheel to suit CO₂ and N₂ nut

#					A	
	DN	size	mm	inch		
ABD950	-	-	-	-	-	28.0



Please Note: Variety of fittings in mild steel or stainless steel available, other fittings available on request. We reserve the right to make technical changes without notice.

